

TACOMA

- CHS and Cargill formed TEMCO joint venture in 1999 to manage Tacoma grain export facility.





- In 2012 TEMCO expanded the joint venture to include the Kalama and Portland grain export facilities.





- In 2023 TEMCO expanded the joint venture to include Houston, TX. grain export facility.



TEMCO Portland, Ore.

Opened 1955	Joined TEMOC 2012
Primary product	Wheat
Top export destinations	Southeast Asia, Middle East, China
Storage capacity	1.3 million bushels
Grain loaded annually	35 million bushels
Loadout capacity	40,000 bushels per hour
Barges unloaded annually	400
Railcars unloaded annually	600
Oceangoing vessels loaded annually	40



TEMCO Tacoma, Wash.

Opened 1975	Joined TEMCO 1992
Primary products	Soybean, corn
Top export destinations	China, Japan, South Korea, Taiwan
Storage capacity	3 million bushels
Grain loaded annually	200 million bushels
Loadout capacity	80,000 bushels per hour
Railcars unloaded annually	52,000
Oceangoing vessels loaded annually	100+



Export
Terminals

TEMCO Kalama, Wash.

Opened 1962	Joined TEMCO 2012
Primary products	Wheat, sorghum, soybeans, corn, peas
Top export destinations	China, Southeast Asia, Central America, Middle East
Storage capacity	6.5 million bushels
Grain loaded annually	250 million bushels
Loadout capacity	120,000 bushels per hour
Barges unloaded annually	300
Railcars unloaded annually	62,000
Shuttle trains unloaded annually	530+
Oceangoing vessels loaded annually	150+



TEMCO Houston, Texas

Opened 1967	Joined TEMCO 2023
Primary products	Wheat, sorghum, corn, soybeans
Top export destinations	North Africa, China, Mexico, South America
Storage capacity	6 million bushels
Grain loaded annually	140 million bushels
Loadout capacity	140,000 bushels per hour
Railcars unloaded annually	40,000
Shuttle trains unloaded annually	480+
Oceangoing vessels loaded annually	100-120



Export
Terminals

TEMCO Portland (Irving)

- Original ship loader at Irving



TEMCO Portland (Irving)



Storage Capacity

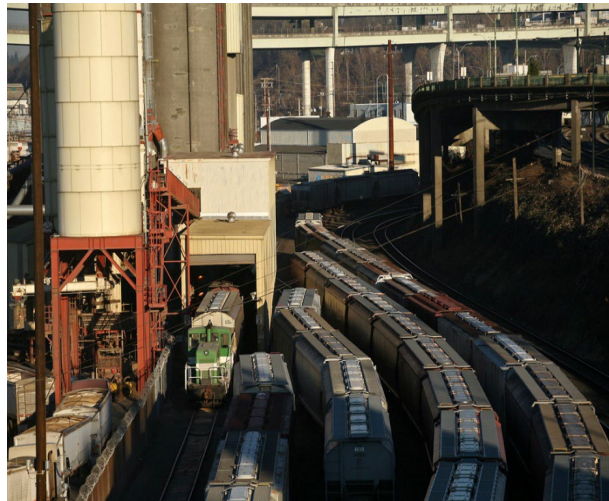
- New House 21 Bins
 - 14 @ 57,000 bu each
 - 7 @ 15,000 bu each
- Old House 19 Bins
 - 8 @ 40,000 bu each
 - 8 @ 12,000 bu each
 - 3 @ 25,000 bu each
- Total Capacity =
1,300,000 Bushels
(35,381 mt)
- Annual Throughput up to
70 myn bushels (1.9 myn
mt)

TEMCO Portland (Irving)



Barge / Rail Unloading

- Barge Receiving
 - Main source of receiving
 - 30,000 bu/hr
 - Tidewater & Shaver
- Rail Receiving
 - Serviced by UP
 - 55 Cars/Day
 - 25,000 bu/hr



TEMCO Portland (Irving)



Truck Unloading

- Automated Compuweigh SmartTruck system added in 2015
- Can unload up to 165 trucks/day
- 25,000 bu/hr



TEMCO Portland (Irving)

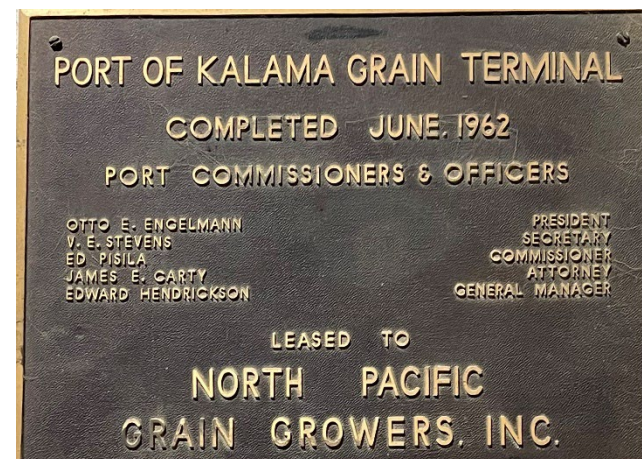
Ship Loading

- 5 Spouts
 - 40,000 Bu/Hr (1100 mt)
- Dock
 - 300 Ft Length



TEMCO KALAMA TERMINAL

- Completed in 1962 by North Pacific Grain Growers
- Leased from the Port of Kalama
- Located in SW Washington at mile marker 77 of the Columbia River
- 30 miles NW of Portland, OR and 120 miles south of Seattle, WA
- Licensed United States Federal Warehouse
- Site is approximately 41 acres (165,000 sq m) with 2,300' (700m) of river frontage





Staffing and Labor

- Managed by 22 TEMCO employees
- Grain Handlers and Stevedore employees are registered members of ILWU:
 - Local 21
 - Local 92

Rail Receiving

- **+62,000 Railcars Per Year**
- **85% Total Export Volume**
- **BNSF Main Lines**
- **Rail Service Providers**
 - **BNSF, UPRR, CPRR**
- **Rail is the primary mode of receiving product**
- **Rail yard accommodates 4 shuttles**
- **120,000 BPH (3200 MTPH) if unloading 2 shuttles at once**
- **Can unload a single shuttle in 10-12 hours**
- **Capable of unloading 2 shuttle trains (230 railcars) simultaneously**





Common Partners

- Rail
 - BNSF and Union Pacific
- Vessel's Agencies
 - Blue Water, Southport, Transmarine, General Steamship
- Barges
 - Shaver and Tidewater
- Tug Assist
 - Shaver

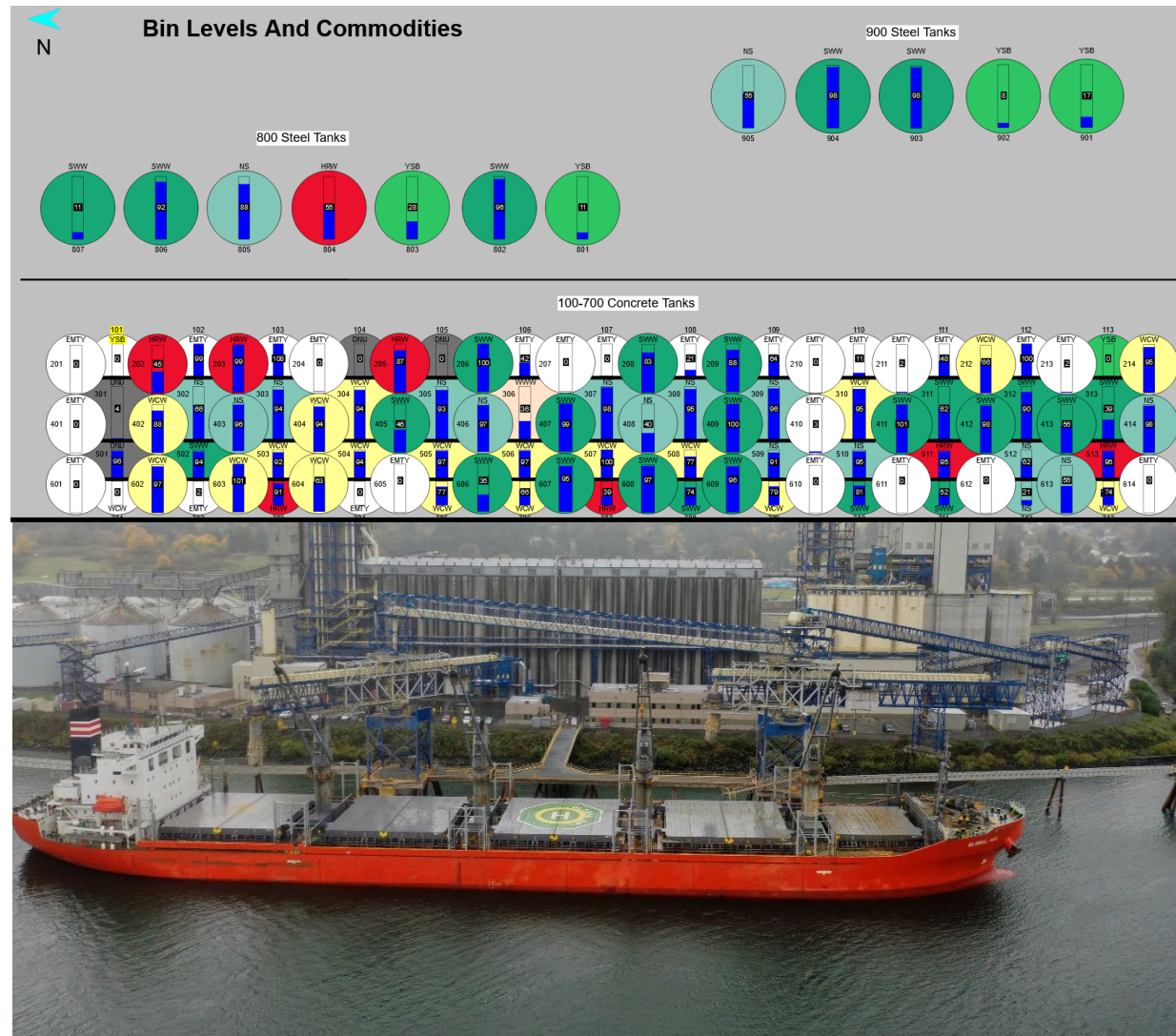


BARGE RECEIVING

- **+250 Barges Per Year**
- **15% Total Export Volume**
- **Columbia/Snake River System**
 - **Eastern Washington**
 - **Oregon**
 - **Idaho**
- **Barge/Tug Service Providers**
 - **Shaver**
 - **Tidewater**
- **560' Dock (170M)**
- **20,000 BPH (500 MTPH)**
- **Columbia River Barges avg 120,000 bu (3200 mt)**

INVENTORY MANAGEMENT

- 6.5 million bushels (176,903 MT) storage capacity
- 94 Concrete silos
- 12 Steel Tanks
- 8 Concrete shipping bins
- 480,000 bushels (13,000 MT)
- Handling YC, YSB, YGS, HRW, SWW, NS, DNS, Club, WW, Durum, Peas



Cleaning Building



- 5 Arrow Aspirators
- 5 BM&M Multi-Deck Screeners for Wheat, Corn and Soybeans
- 2 Arrow Indent Cylinders
- 2 Arrow Reclaim Screeners
- 55,000 bph (1,500 mt)

Key Destinations

Wheat: (NS/DNS, HRW, SWW, WW, Durum)

- Japan, S. Korea, Taiwan, Malaysia, Vietnam, Indonesia, Philippines, Yemen, Guatemala/El Salvador, Colombia/Ecuador, Bangladesh

Soybeans and Milo:

- China

Corn:

- S. Korea, Japan, Taiwan, China



VESSEL LOADING DOCK

- +150 Vessels Per Year
- Two ship loading spouts by Agrico with capacity of 120,000 BPH (3200 MTP) each
- Ship Dock is 1,100 feet
- Max vessel draft 43' (13.1m)
- Capable of loading Panamax and Handymax vessels



Automation / Control Room

- Control System or HMI
 - Vessel Loading Operations
 - Blending/Conditioning
 - Rail/Barge Unloading Operations
 - Inventory
 - Truck Loadout Operations
 - Security Camera
- FGIS/WSDA Oversight





QUESTIONS OR COMMENTS?