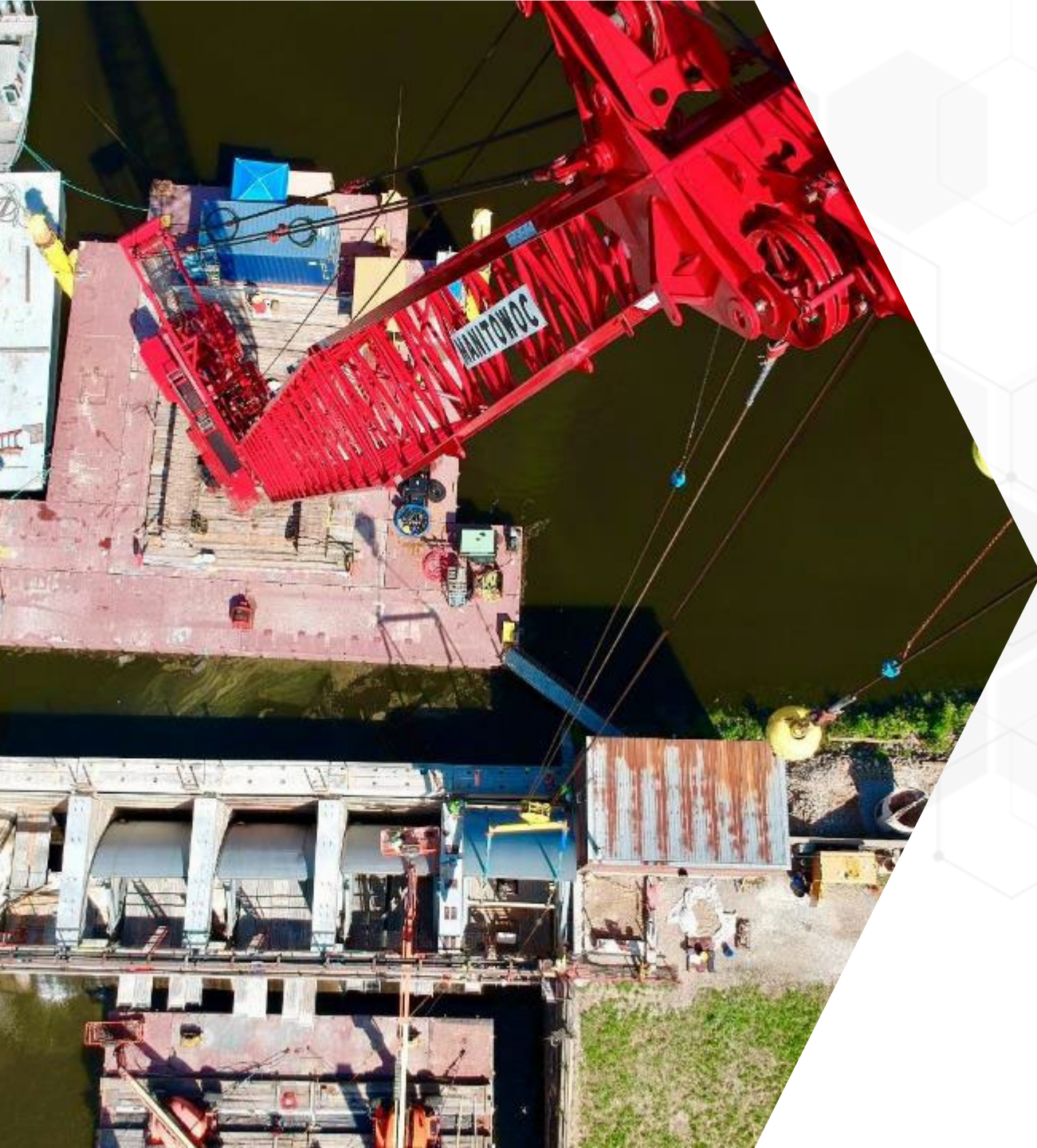




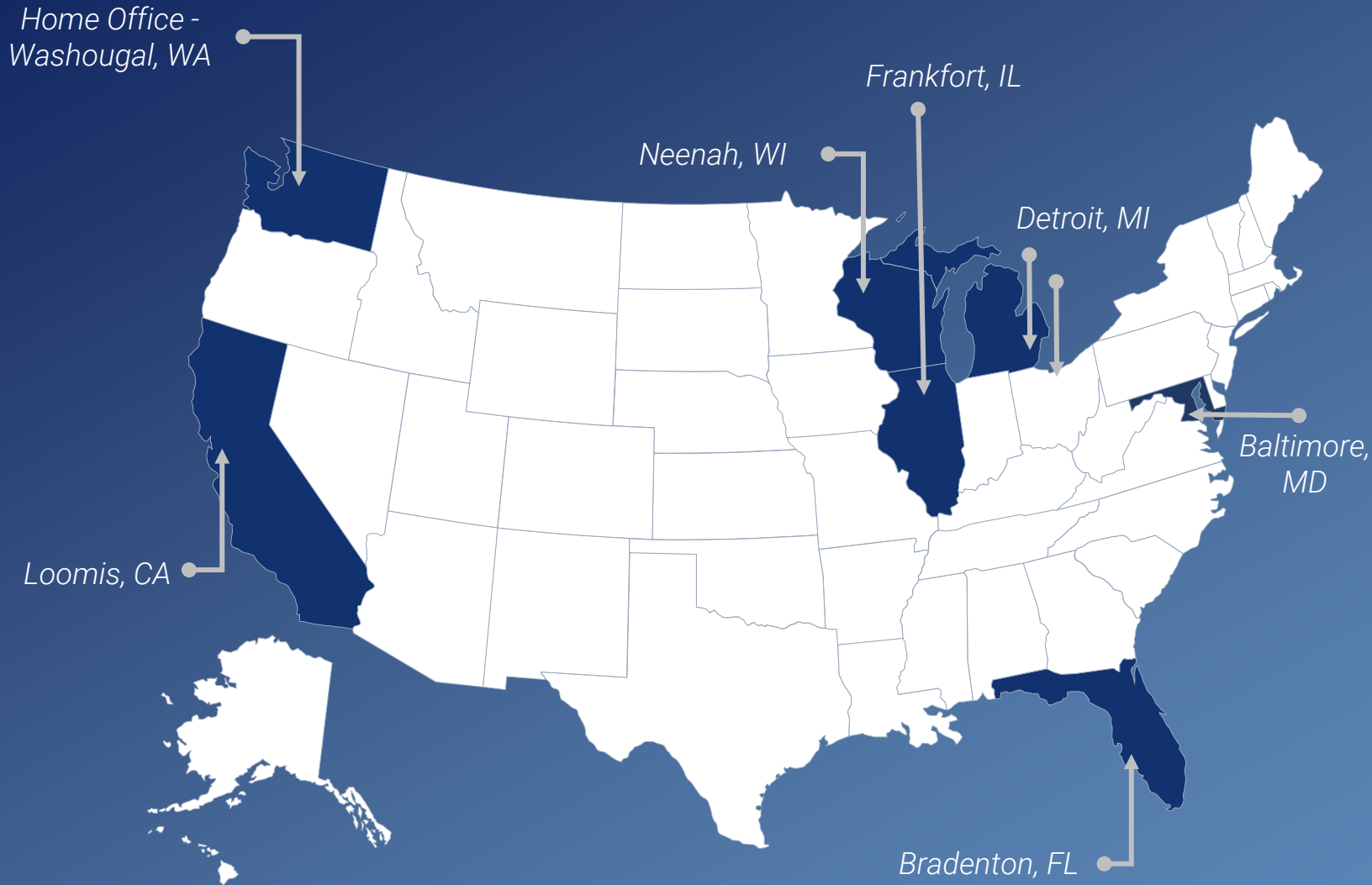
# Ballard Marine Construction

Specialty Underwater and Marine Contractor



# Safety Moment

# LOCATIONS



- Privately Held
- Annual Revenue - \$85M
- Regional Offices for North American Coverage
- Projects Worldwide

70  
Salaried  
Staff



145  
Craft Trade  
Labor



# Ballard History

**1978**

Ballard Diving & Salvage founded in Seattle



**2006**

Shilo Hutton acquires Ballard Diving & Salvage



**2001**

Northwest Underwater Construction (NUC) founded by Jesse Hutton



**2008**

Hyperbaric Services Division Started



**2010**

Ballard opens Southwest Regional Office



**2013**

NUC and Ballard merge into single entity, Ballard Marine Construction



**2013**

Ballard acquires assets from Veolia and Ballard's Midwest Regional Office open



**2017**

Traylor Bros. invests in Ballard



**2018**

Ballard opens Southeast Regional Office



**2020**

Ballard's Remote Sensing and Technology Group (RSTG) created



**2022**

Ballard acquires assets from MTI and Mid Atlantic Regional Office open



# A Partnership Like No Other



Work with one of us – or work with all of us





**BALLARD**  
MARINE CONSTRUCTION

## **Transportation**

Bridges  
Tunnels  
Marine Facilities  
Port Facilities

## **Environmental**

Marine Salvage  
Spill Response  
Waste Removal

**MARKETS  
SERVICED  
BY  
BALLARD**

## **Power**

Fossil  
Hydro  
Nuclear Facilities  
Renewable Facilities

## **Industrial**

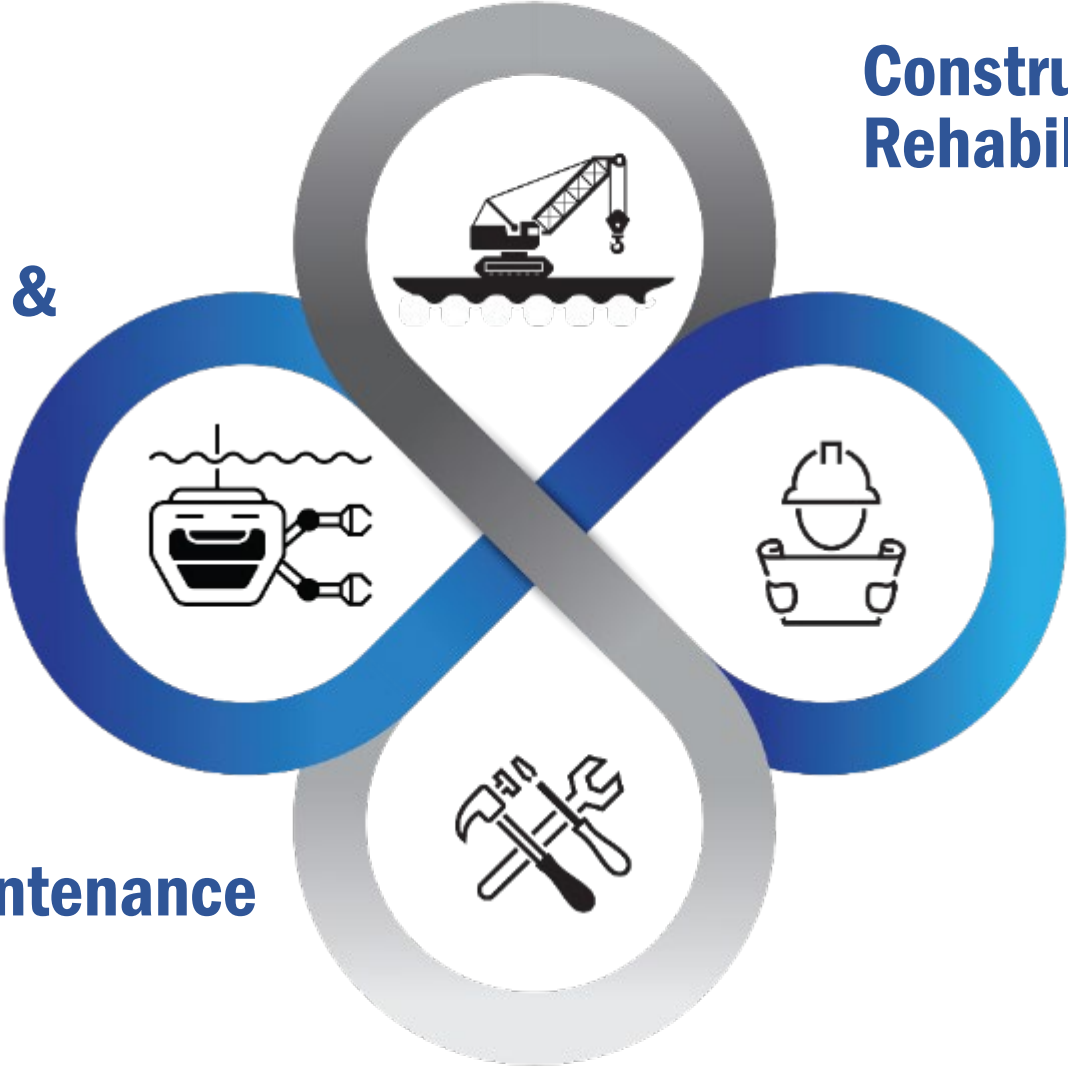
Oil	Pulp
Gas	Paper
Metal	Steel

## **Water/ Wastewater**

Wastewater Reservoirs  
Raw Water  
Process and  
Cooling Systems

# Ballard's Integrated Approach

Inspection & Survey



Construction & Rehabilitation

Engineering & Constructability Support

Maintenance

# Ballard's Assets

- **Dive Boats**
- **Hyperbaric/Decompression chambers**
- **Underwater video and survey equipment**
- **ROV and AUV vehicles**
- **Heavy salvage equipment**
- **Underwater burning and welding equipment**
- **Lightering equipment**
- **Environmental spill clean-up equipment and supplies**
- **Hydraulic and pneumatic tooling**
- **Fleet of commercial trucks**



# Ballard's Supply Chain

- **Tugs and Barges**
- **Engineering & Permitting**
- **Safety & Life Support**
- **Flight Services**
- **Environmental Testing**
- **Waste Disposal**
- **Equipment Rental Companies**
- **Cranes and Heavy Equipment**
- **Fabrication**
- **Transportation and Heavy Haul**



# Ballard and the USCG Overview



**BOA Number: 70Z08421GS0003100**

**Modification:**

**Contractor's Name: BALLARD MARINE  
CONSTRUCTION LLC.**



# Inspection & Survey ROV, AUV and Diver

- 2,000 ft depth rating
- 2,100 ft and 6,700 ft tether lengths
- Feature detection in zero visibility water
- Wide range of high-resolution sensors including sonar, tracking and black and white/color cameras
- High and low flow
- 3D mapping



# Engineering & Constructability Support

- Early Contractor Involvement and Design-Build
- Owner/Engineer/Contractor Relationships
- Cost effective and buildable solutions
- Enhance integration of construction means, methods, and schedule
- Expedited live-review and full contractor buy-in on work plans developed during pre-construction
- Change order reduction
- Cost and schedule savings



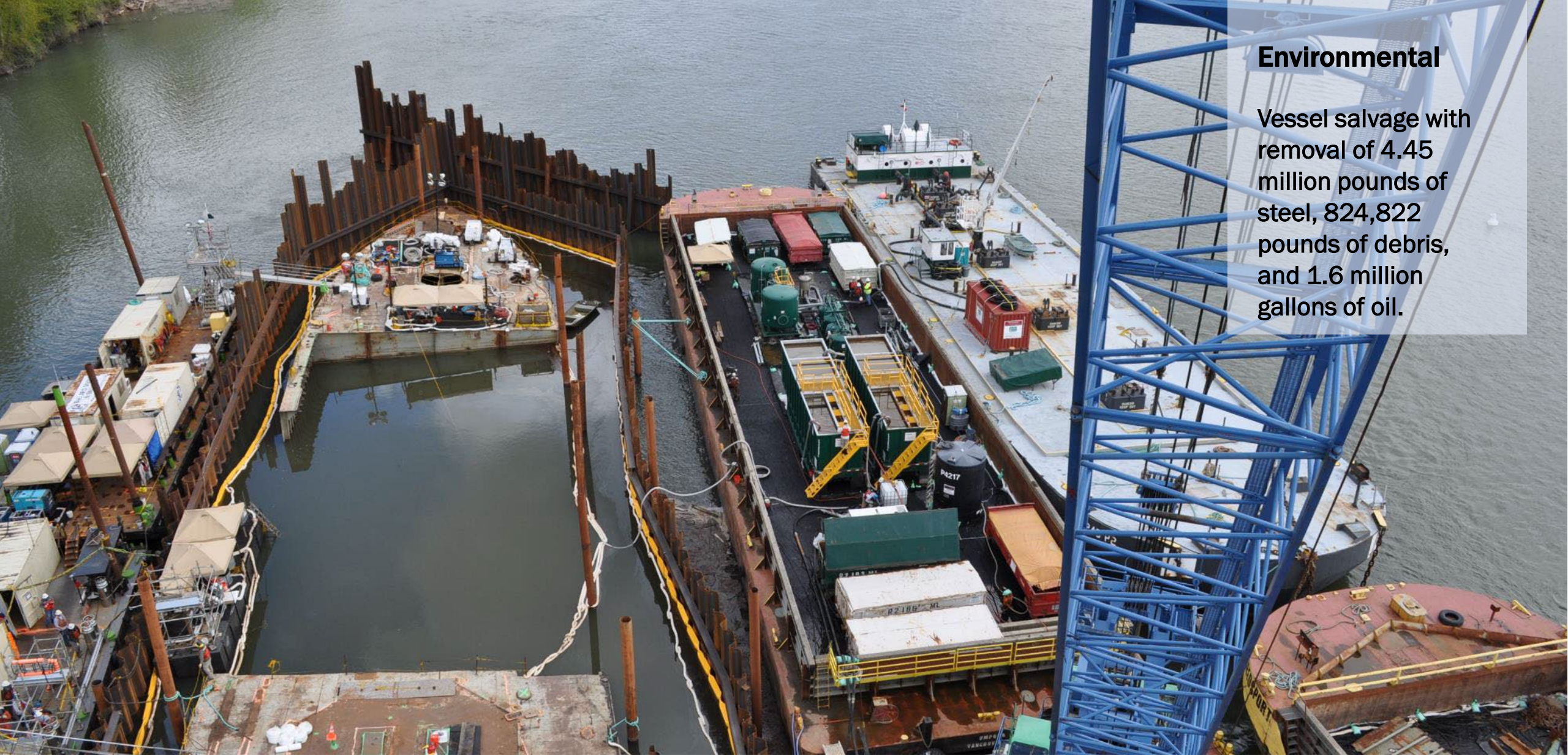


## Environmental

Safe removal of the half sunken vessel loaded with cargo and petroleum products. Disposal of petroleum, 15,000 pounds of debris and scrap.

**M/V Tiffany Salvage**





## Environmental

Vessel salvage with removal of 4.45 million pounds of steel, 824,822 pounds of debris, and 1.6 million gallons of oil.

**Davy Crockett Salvage**





## Environmental

Patched and filled the vessel during an emergency call to remove for deconstruction and disposal.



## Environmental

Performed environmental hazard mitigation, assessed structural integrity, and developed salvage plans.

# American Challenger Salvage





## Environmental

Salvage of a 1968 wooden research vessel.

**R/V Hero Salvage**





## Environmental

Emergency salvage of the 90-foot-long UB3 crane barge.

# Ross Island Sand And Gravel Barge Salvage

## Environmental

Emergency, extensive temporary repairs to a 623-foot vessel that had grounded.



**Sparna Salvage**





## Experience you can count on...

We have the technical capabilities and resources necessary to provide specialty underwater and marine construction turnkey services.

# Contact Us



## **Vince Piscitello**

VP of Business Development, Western Region

c: 360.216.5821

[vince.piscitello@ballardmc.com](mailto:vince.piscitello@ballardmc.com)