

# Columbia River Maritime Industry & Introduction to COBALT 2022



Columbia River Steamship Operators' Association, Inc.  
Kate Mickelson, Executive Director



# CONTENT



*Part 1*  
**BRIEF INTRODUCTION TO THE CRSOA**



*Part 2*  
**BRIEF OVERVIEW OF THE COLUMBIA RIVER**



*Part 3*  
**OVERVIEW OF VESSELS THAT CALL THE COLUMBIA RIVER**



*Part 4*  
**KEY PLAYERS ON THE COLUMBIA RIVER**



*Part 5*  
**THANK YOU! BON VOYAGE!**



# SAFETY BRIEFING & INTRODUCTIONS



# OVERVIEW

- Columbia Basin Leadership Training
  - Now coordinated with USCG Missions Day
  - Introduction to Industry
  - Organized by CRSOA
  - Presented by Industry Professionals
  - Developed by USCG and CRSOA





# BRIEF INTRODUCTION TO THE CRSOA



*Proudly serving ocean shipping interests calling in the Oregon and Southwest Washington areas since 1922*



*history of the*  
**CRSOA**



The Columbia River Steamship Operators' Association (CRSOA), established in 1922, includes members representing ship owners, operators, agents, towing, and bunkering, as well as facilities and ports along the Columbia, Willamette, Snake River and Oregon Coast River Systems.

# GENERAL MEMBERS

## AGENTS

ACGI Shipping  
Blue Water Shipping, Inc.  
Cascade Marine Agencies  
Fujitrans USA, Inc.  
General Steamship Corp, Ltd  
Geo. S. Bush & Co., Inc.,  
GSB Marine Services LLC  
Inchscape Shipping Services  
Intercruises Shoreside & Port Services  
Interport PNW, LLC  
K-Line America, Inc.  
Leland Vessel Assistance  
North American Shipping Agencies, LLC  
Norton Lilly International

SMS International Shore Operations US Inc.  
Southport Agencies, Inc.  
Talon Marine Services, LLC  
Transmarine Navigation Corp.  
Transversal International Corp

## TOWING/BUNKERING

Foss Maritime  
Olympic Tug and Barge  
Polar Tankers, Inc. NW/  
Conoco Phillips Marine  
Rainer Petroleum Corp.  
Sause Bros.  
Shaver Transportation  
Tidewater Barge Lines

## PORTS

Port of Kalama  
Port of Longview  
Port of Portland  
Port of Columbia County  
Port of Vancouver USA

## LAUNCH COMPANIES

Anchorage Launch Service  
Columbia River Launch Service  
Ship to Shore  
Kiwis Water Taxi

# ASSOCIATE MEMBERS

## TERMINALS

Columbia Grain International  
Pacifcor LLC  
United Grain Corporation

## INSPECTION, CLEANING, SECURITY, ETC.

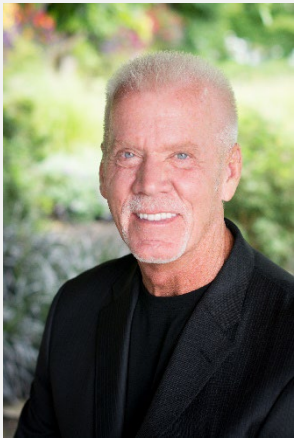
Executive Security Services, Inc.  
National Cargo Bureau  
Overseas Merchandise Inspection Co. Ltd  
Three D's Marine, Inc.  
Tidal Transport & Trading USA Ltd  
West Coast Marine Cleaning  
SGS North America, Inc.  
Ballard Marine

## SEAFARERS CENTERS/SUPPORT

Port of Vancouver Seafarers Center  
Portland Seafarers Center  
Business Oregon

# BOARD OF DIRECTORS

L:R John Coyle, Blue Water Shipping, Chair  
Rob Rich, Shaver Transportation, Vice Chair  
Phil Brotherton, Transmarine Navigation, Secretary  
Caitlin Sause, Sause Bros.  
Ion Badea, Norton Lilly  
Ray Gebauer, General Steamship  
Demetri Papachristopolous, North American Shipping Agencies



# CRSOA TEAM

## LEGAL:

Darien Loiselle, David Boyajian, Brien Flanagan  
Schwabe Williamson & Wyatt

## LOBBYISTS:

Mark Landauer, MLJ Consulting  
Amber Carter, Amber Carter Government Relations

## STAFF:

Kate Mickelson, Executive Director  
Tereza Edwards, Director of Member Services

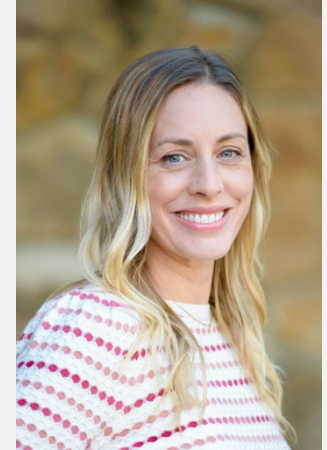
## LEGAL



## LOBBYISTS



## STAFF



Celebrating  
100 YEARS!

September 16, 1922

THE NAUTICAL GAZETTE

**FLOTSAM AND JETSAM**

**GARLAND VESSELS LOADING FOR RUSSIA**  
The steamer James B. Duke, formerly the Eastern Cloud of the Garland Steamship Corporation, has been sent from New York to Petrograd with a full cargo for account of the American Relief Administration. The Garland Company is also loading in New York another of its steamers, the West Isles, for Petrograd with miscellaneous cargo furnished by the American Relief Administration.

**GILLO CESARE'S RETURN VOYAGE**  
A cable received by the Italia-America Shipping Corporation states that the Gillo Cesare, the new 21,600 ton liner of the company arrived at Naples early on September 9th having made her maiden run from New York in nine days and eight hours. She carried 1,200 passengers. Advises indicate that the vessel made the trip in splendid condition.

**PETROGRAD'S PORT ARRIVALS**  
From the opening of navigation and until July 1st, 164 vessels entered the port of Petrograd. Forty-eight of these ships flew the Norwegian and 27 the German flag. Only nine American ships called at the port as compared with 26 British and 13 Swedish merchantmen.

**PORTLAND S.S. OPERATORS ASSOCIATION**  
A steamship operators' association has been formed at Portland, Ore., for the purpose of promoting closer relation and toward the development of the port. G. H. Tiering is the chairman of the association.

**AMERICAN MANUFACTURERS TO DISCUSS SUBSIDY**

At the annual convention of the American Manufacturers Export Association to be held October 25th and 26th at the Waldorf Astoria Hotel, New York, the ship subsidy bill will be one of the topics to be discussed. Homer L. Ferguson, President of the Newport News Shipbuilding & Dry Dock Company, will be chairman of the session devoted to the discussion of shipping problems.

**SOCIETE LES AFFRETEURS REUNIS**  
According to a report in New York shipping circles, Jean Stern has resigned as president of Societe les Affreteurs Reunis, operators of the

**Marine Events 50 Years Ago**  
(As reported in THE NAUTICAL GAZETTE of September 14, 1872)

**BREMEN LINE**

The screw steamship Strassburg, built by Messrs. Caird and Co. for the North German Lloyd, proceeded down the Clyde on the 17th ult., on her trial trip, and ran the measured mile of a speed which gave the utmost satisfaction. Her tonnage is 2,652; length over all, 351 ft. 3 in.; breadth of beam, 39 ft.; depth of hold to main deck, 26 ft., height between main and spar deck, 7 ft. 1½ in.; height between lower and main deck, 7 ft. 8 in. She is intended for the West India trade. Engines, direct-acting compound principle, of 360 nominal H.P. On the trip the speed attained over three trials was 11.8 knots; consumption of coal about 1.4 pounds per indicated H.P.

**HAMBURG LINE**

The new steamer Frisia, of this line, arrived here last week. She is 3,500 tons burden, being in length 364 ft., and has 43 ft. breadth of beam. She is a four-decked ship, with hull and three lower decks of iron and the upper deck laid in teak. Her engines are 750 H.P., having 106-inch cylinders, with 6½ ft. stroke. She is very strongly built, and has seven watertight compartments with all of which

SIR CURT  
brook and J  
world, left  
ship Home  
GEORGE  
ing com  
is expe  
Atlantic  
THOMAS  
Vice-Pres  
Corporat  
Va., is  
JAMES  
Dyer  
will re  
Brazil  
CHAS  
constru  
with W  
this city  
Md., wh  
JOHN  
Sun Ship  
on a bu  
CAPITAL  
yards Corp  
McNab Com  
he invest  
Kitchen Bever  
yacht there.  
E. J. MCCORM  
Washington, where  
Board officials in  
United States Lines, a  
Cormack Company is a  
WILLIAM H. MCGEE,  
marine underwriting house  
& Co. for 15 years, has joined  
Schmitt & Co., Inc., insurance  
E. F. POWELL, chairman of the  
directors of the Anglo-American Oil  
called this week on the steamer President  
vett for Europe.  
H. H. RAYMOND, President of the Clyde  
and Malloy Steamship Companies, has now returned  
from a month's yachting trip.



“A steamship operators’ association has been formed at Portland, Ore., for the purpose of promoting closer relation and toward the development of the Port. G. H. Tiering is the chairman of the association.”

*The Nautical Gazette, September 16, 1922*

# INDUSTRY OUTREACH



## NOMINATE THE NEXT MEMBER OF THE QUARTER

We are so fortunate to work with so many amazing industry professionals! Be sure to reach out to us by email to nominate someone in your office today!



THE WATCHSTANDER  
A CRSOA PUBLICATION



facebook "like" us on facebook

# *about the* **CRSOA**



Members of the CRSOA acting as ship agents in the Willamette and Columbia Rivers are appointed by the ship owner or operator to protect their interests at our various terminals and facilities, and are one of the most valuable assets available to ship owners or operators. The ship agent makes all arrangements for the ship and its cargo, prior to arrival, in port, and after departure.





# BRIEF INTRODUCTION TO THE COLUMBIA RIVER



*Proudly serving ocean shipping interests calling in the Oregon and Southwest Washington areas since 1922*

~ 1,500 YEARLY  
VESSELS CALLS



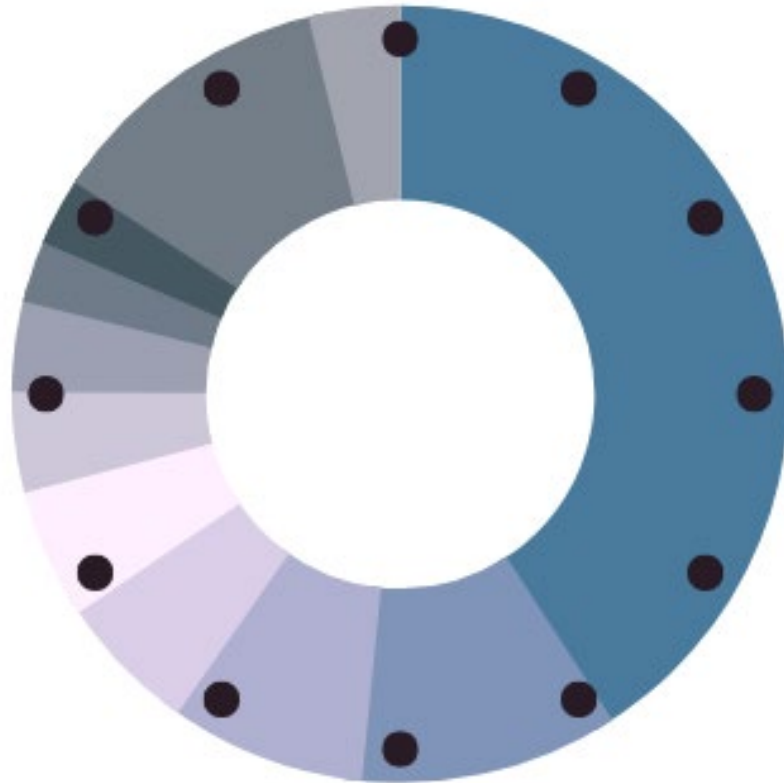
~ >51 MILLION TONS  
OF FOREIGN TRADE  
AT A VALUE OF

~\$22 BILLION

SUPPORTS ~40,000  
LOCAL JOBS



Grain – 557  
 Autos – 147  
 Soda Ash – 111  
 Potash – 79  
 Containers – 74  
 Steel Products – 57  
 Logs – 51  
 Metal & Ores – 35  
 Petcoke – 38  
 Petroleum Barge – 164  
 Petroleum Tanker – 52  
 Total – 1365



Source: Merchant's Exchange

*A little about*

# COMMODITIES



The Columbia River is primarily an export port. Vessels come into the river in ballast and load cargo for export.

# COLUMBIA RIVER COMMODITIES

## #2 US Soy Exports # 2 US Corn Exports

Soy Exports  
8.4 Million Metric Tons (2020)  
Expected to Grow

Corn Exports  
6.1 Million Metric Tons (2020)  
13% US

CORN & SOY



## #1 US Wheat Exports

Nation's leader for wheat exports

60% of all US Wheat

15 Million Metric Tons (2020)

11 states export through the Columbia River

WHEAT



## #1 West Coast Auto Exports

90,000 Subarus imported- POV

215,000 Honda, Toyota, GM, Fiat-Chrysler, Hyundai imported - POP

47,000 autos exported - POP

Anticipated to Grow

AUTOS



## #1 West Coast Wood Exports #1 West Coast Mineral Exports

Mineral Bulk  
Top West Coast gateway  
10 Million Tons (2019)  
(Potash, soda ash, bentonite clay, ag chemicals, etc.)

Wood Products  
Top exporter on West Coast  
2 Million Tons (2019)

MINERAL BULKS &  
WOOD PRODUCTS



Other commodities such as petroleum products, project cargo (i.e. wind blades), containerized municipal waste, wood chips, sand, gravel and others also travel on our river system. You'll also see deep draft cruise ships as well as river cruises on the Columbia.

# NAVIGATION

## THE COLUMBIA RIVER CHANNEL DEPTHS

- COLUMBIA RIVER BAR – 55'
- BAR TO VANCOUVER – 43' (105 MILES)
- BARGE CHANNEL – 14' (365 MILES, EIGHT LOCKS)





# VESSELS THAT CALL THE COLUMBIA RIVER



# COLUMBIA RIVER VESSEL TYPES



*Open Hatch Cargo Ship*  
(Photo: COLRIP)



*General Cargo Ship*



*Heavy Lift Ship*  
(Photo: KOIN)



*Log Carriers*  
(Photo: Sam Beebe)

# COLUMBIA RIVER VESSEL TYPES



*Panamax Size Bulk Carriers*  
(Photo: Capt. Chuck Patching, COLRIP)



*Container Ship*  
(Photo: Tim Jewett, Port of Portland)



*Cruise Ship*  
(Photo: Port of Astoria)



*Car Carrier/ Pure Car Carrier*

# COLUMBIA RIVER VESSEL TYPES



*Oil Tankers*  
(Photo: COLRIP)



*Articulated Tug and Barge/ ATB*  
(Photo: COLRIP)



*Product Tankers*



*Military Vessels*

# COLUMBIA RIVER VESSEL TYPES



*Suction Dredge (Dredge OREGON)*



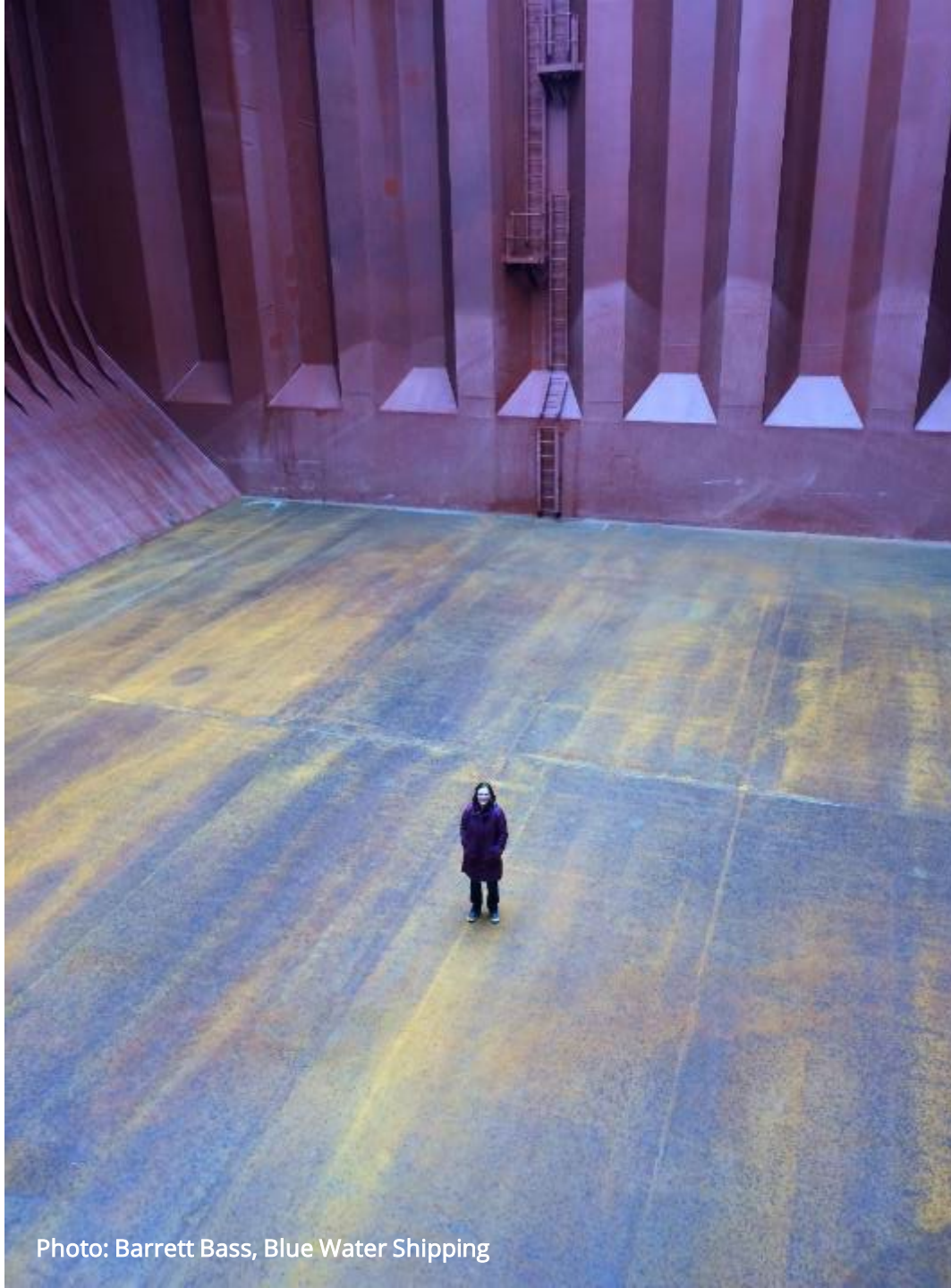
*Hopper Dredge (Dredge ESSAYONS)*  
*(Photo: Marine Traffic)*



*Sea Going Tug*  
*(Photo: Sause Bros)*



*Tug and Barge*  
*(Photo: Tidewater)*



*ship holds are*  
**HUGE**



In fact, in the Columbia River we load an average Panamax vessel with 66,000 MT of grain, which is approximately 2,435,060 bushels which takes roughly 48,500 acres to grow!

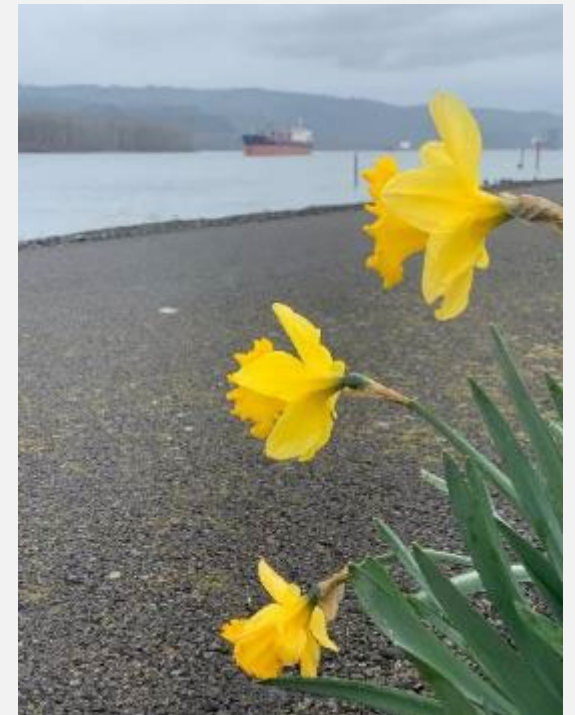
# TRANSIT TIMES

- AUSTRALIA -27 DAYS
- BRAZIL – 34 DAYS
- CHILE – 22 DAYS
- CHINA – 23 DAYS
- EUROPE – 37 DAYS
- INDIA- 37 DAYS
- INDONESIA – 26 DAYS
- JAPAN – 19 DAYS
- KOREA – 19 DAYS
- MEXICO – 5 DAYS
- PANAMA – 16 DAYS



(Photo: Kiwis Water Taxi)

# COLUMBIA RIVER SHIP WATCHING LOCATIONS



(Photo: Capt. Chuck Patching, COLRIP)



# KEY PLAYERS ON THE RIVER



## OREGON PORTS

- Port of Astoria (RM 12)
- Port of Columbia County (RM 85)
- Port of Portland (Willamette River)
- Port of Coos Bay (Southern Oregon)

## WASHINGTON PORTS

- Port of Longview (RM 65)
- Port of Kalama (RM 75)
- Port of Vancouver (RM 105)

## CALLS BY PORT AREA

- Portland – 769
- Kalama – 287
- Longview – 268
- Vancouver – 256
- Rainier – 14
- Astoria – 12
- St. Helens – 2

Source: Merchants Exchange

# *Columbia River/ Oregon* DEEP DRAFT PORTS





# DEEP DRAFT PORT PRESENTATIONS

## TUESDAY

- Port of Portland

## WEDNESDAY

- Port of Columbia County
- Port of Vancouver USA

## FRIDAY

- Port of Kalama
- Port of Longview





*Columbia Willamette*  
**GRAIN ELEVATORS**

**2021 VESSEL CALLS BY GRAIN ELEVATOR**

- Kalama Export – 130
- Temco Kalama – 123
- EGT – 116
- United Grain – 95
- Columbia Grain – 52
- Temco Portland - 39

Source: Merchants Exchange





# DEEP DRAFT PORT PRESENTATIONS

## WEDNESDAY

- United Grain Corporation (Tour)
- EGT
- Temco (Temco Kalama, Temco Portland)
  
- Unavailable: Pacificor

# VESSEL/SHIP AGENT



Photo: Tony Anderson, Transmarine



# BRINGING SHIPS TO THE COLUMBIA RIVER



ORIGIN

BROKERS PLACE CARGOS ON OPEN MARKET



OBTAIN BIDS

VESSEL OWNERS MONITOR POTENTIAL FIXTURES



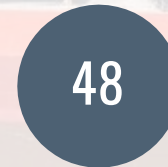
VESSEL OWNERS REACH OUT TO AGENTS

AGENT PAYS ALL VENDORS –  
PILOTS, TUGS, LINES, DOCKAGE, CRSOA



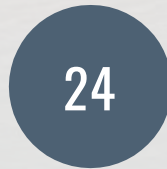
AGENT KEEPS ALL PARTIES UPDATED DAILY

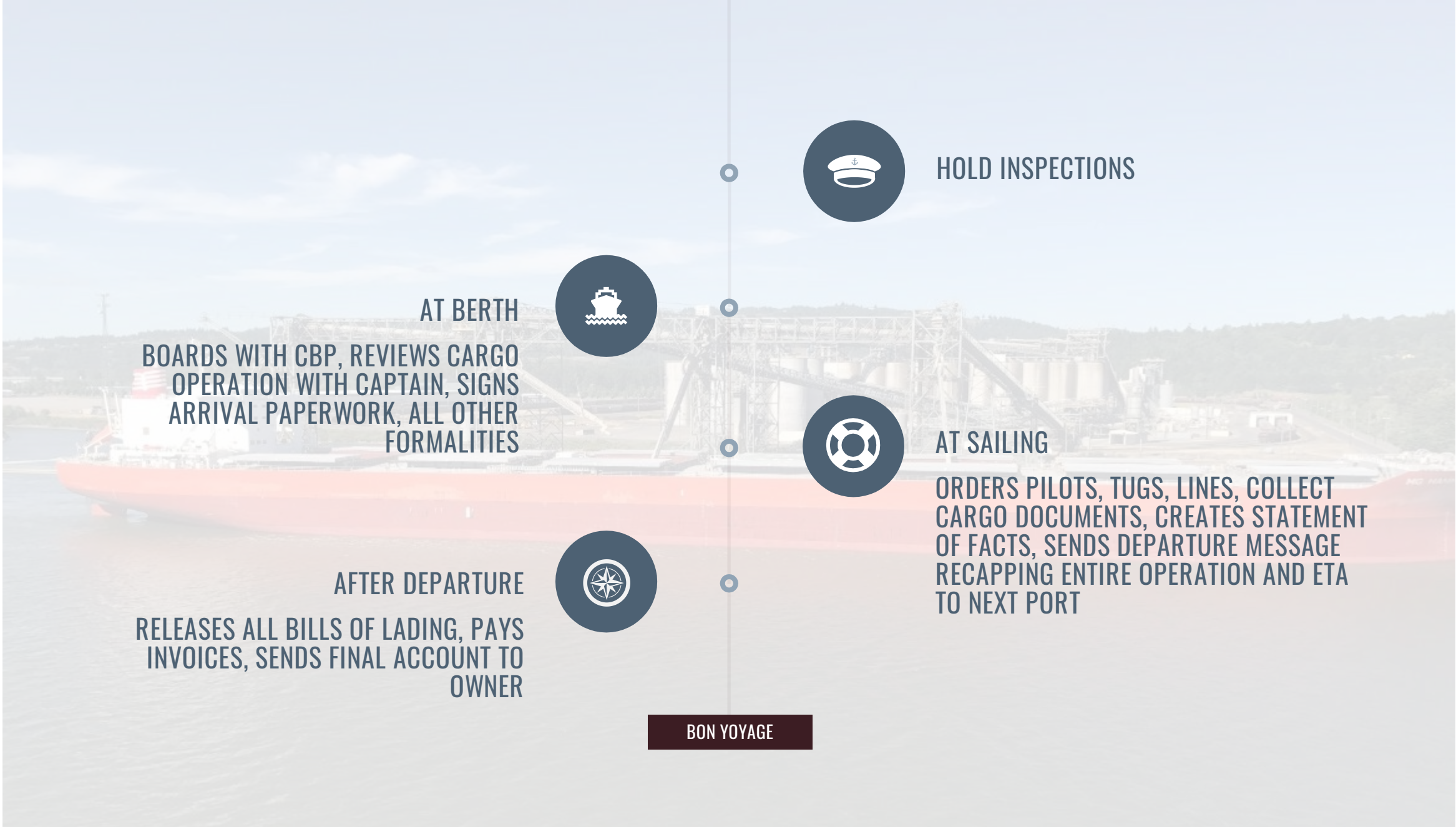
96 HOURS PRIOR TO ARRIVAL  
US COAST GUARD ENOA (NOTICE OF  
ARRIVAL), MFSA OIL SPILL CONTINGENCY  
PLAN ENROLLMENT, USDA ASIAN GYPSY  
MOTH, HOMELAND SECURITY CREW  
CHECK, ETC.



48 HOURS PRIOR TO ARRIVAL  
US CUSTOMS AND BORDER PROTECTION  
CARGO OPERATIONS, IMMIGRATION,  
CREW, ETC.

24 HOURS PRIOR TO ARRIVAL  
OR/WA BALLAST WATER, STEVEDORES,  
LABOR, TUGS, LINES, PILOTS





**HOLD INSPECTIONS**



**AT BERTH**

**BOARDS WITH CBP, REVIEWS CARGO OPERATION WITH CAPTAIN, SIGNS ARRIVAL PAPERWORK, ALL OTHER FORMALITIES**



**AT SAILING**

**ORDERS PILOTS, TUGS, LINES, COLLECT CARGO DOCUMENTS, CREATES STATEMENT OF FACTS, SENDS DEPARTURE MESSAGE RECAPPING ENTIRE OPERATION AND ETA TO NEXT PORT**



**AFTER DEPARTURE**

**RELEASES ALL BILLS OF LADING, PAYS INVOICES, SENDS FINAL ACCOUNT TO OWNER**

**BON VOYAGE**



*A little about*

# OREGON BOARD OF MARITIME PILOTS



The Board of Maritime Pilots licenses and regulates all pilots serving Oregon's designated pilotage grounds. The Board's primary responsibilities include establishing license qualifications and training standards, setting rates for pilot service, and investigating maritime incidents.



# COLUMBIA RIVER BAR PILOTS



Photos: Columbia River Bar Pilots

# COLUMBIA RIVER PILOTS



Photos: Columbia River Pilots



# PILOTAGE PRESENTATIONS

## THURSDAY

- Oregon Board of Maritime Pilots
- Columbia River Bar Pilots
- Columbia River Pilots



# LAUNCH OPERATORS



Photos: Columbia River Launch

# LAUNCH OPERATORS PRESENTATIONS



TUESDAY

- Columbia River Launch



Photos: Sause Bros.,  
Tidewater Barge Lines

*is it a*  
**TOWBOAT OR  
TUGBOAT?**



If you see it pushing barges up and down the Columbia River then it's a TOWBOAT.

If you see it performing ship assist work (guiding ships in and out of the harbor and/or helping them dock) or pulling vessels at sea then it's a TUGBOAT.

# SHIP ASSIST TUGS



# TUG/TOW PRESENTATIONS

A dark blue map of the Pacific Northwest region, showing the Columbia River and its tributaries. The map includes labels for 'CANADA', 'U.S.', 'PACIFIC OCEAN', 'Columbia River', 'Bonneville', and 'The Dalles'.

## TUESDAY

- Columbia River Towboat Association
  - Shaver
  - Foss
  - Tidewater



*A little about*

# STEVEDORES AND LONGSHOREMEN



A stevedore is an organization who manages the operation of loading or unloading a ship. Loading and unloading ships requires knowledge of the operation of loading equipment, the proper techniques for lifting and stowing cargo, and correct handling of hazardous materials. Longshoremen refer exclusively to the skilled dockworkers, while stevedores, are a separate trade union, who work on the ships, operating ships cranes, and moving cargo. In usual present-day U.S. waterfront word usage, a stevedore typically owns equipment used in the loading or discharge operation. Stevedores hire longshoremen to load and unload cargo under the direction of a stevedore superintendent.

-Admiralty US Legal

# STEVEDORES AND LONGSHOREMEN



Photos: Port of Longview

# GOVERNMENT AND REGULATORY AGENCIES



**US Army Corps  
of Engineers**  
Portland District



**U.S. Customs and  
Border Protection**



**DEPARTMENT OF  
ECOLOGY**  
State of Washington



State of Oregon  
**Department of  
Environmental  
Quality**

business  
**oregon.**



Washington  
Department of  
**FISH AND  
WILDLIFE**



**...AND MORE!**

# GOVERNMENT AND REGULATORY AGENCIES





# GOVERNMENT AND REGULATORY AGENCIES PRESENTATIONS

## TUESDAY

- US Army Corps of Engineers

## WEDNESDAY

- US Customs and Border Protection
- National Cargo Bureau
- NOAA Office of Coast Survey
- NOAA Northwest River Forecast Center

## THURSDAY

- Sector Columbia River
- Oregon Board of Maritime Pilots
- Maritime Administration (MARAD)
- Fire Response Boat Tours

## FRIDAY

- Oregon Department of Environmental Quality – Ballast Water
- Oregon Department of Environmental Quality – Emergency Response
- Washington Department of Ecology

# ASSOCIATIONS



...AND MORE!

# ASSOCIATIONS PRESENTATIONS

A dark blue map of the Pacific Northwest region, showing the coastline of the Pacific Ocean and the Columbia River. The map includes labels for 'PACIFIC OCEAN', 'Columbia River', 'Bonneville', and 'The Dalles'. The map is overlaid on a dark blue background.

## TUESDAY

- Columbia River Steamship Operators Association (CRSOA)
- Pacific Northwest Waterways Association (PNWA)
- Columbia River Towboat Association (CRTA)

## THURSDAY

- Lower Columbia Region Harbor Safety Committee (LCRHSC)
- Merchants Exchange
- Maritime Fire and Safety Association (MFSA)
- Fire Response Boat Tours

## FRIDAY

- Clean Rivers Cooperative



# THANK YOU! BON VOYAGE!



Kate Mickelson, Executive Director  
Columbia River Steamship Operators' Association  
200 SW Market Street, Suite 190, Portland, Oregon 97201  
kate@crsoa.net | 503.505.3008  
www.crsoa.net