

The background of the slide is a light gray gradient with several realistic water droplets of various sizes scattered across it. The droplets have highlights and shadows, giving them a three-dimensional appearance. The text is centered on the page.

COLUMBIA RIVER TOWBOAT ASSOCIATION

COBALT 2019

CRTA

- **EIGHT MEMBER COMPANIES REPRESENTING THE MAJOR TOWING LINES PROVIDING SERVICE ON THE COLUMBIA SNAKE RIVER SYSTEM**

DIVERSIFIED MARINE INC.

- PORTLAND BASED SHIPYARD FOR NEW CONSTRUCTION AND REPAIR.
- FLOATING CRANE SERVICE, SPUD BARGES, DRY DOCKS.
- 6 TUGS

DIVERSIFIED MARINE



SAUSE BROS OCEAN TOWING

- COOS BAY OREGON BASED SEAGOING COMPANY
- COLUMBIA RIVER OPERATIONS INCLUDE 6 TUGS AND BARGES TRANSPORTING PETROLEUM.
- 6 DECK BARGES AND 3 TUGS PROVIDING GENERAL CARGO SERVICE COASTWISE AND TO HAWAII.

SAUSE BROS.





OLYMPIC TUG AND BARGE

- SEATTLE BASED MARINE SERVICES COMPANY.
 - COLUMBIA RIVER OPERATIONS WITH 3 TUGS FOR BUNKERING AND HARBOR SERVICES.
- 

OLYMPIC TUG AND BARGE



SDS LUMBER COMPANY

- BINGEN WA BASED TUG COMPANY.
- OPERATES 6 TUGS WITH BARGE SERVICE FOR WOOD PRODUCTS, AGGREGATES, SPECIAL SERVICES, CONSTRUCTION, AND JFT SUPPORT.

SDS MARINE



BERNERT BARGE LINES

- COLUMBIA SNAKE RIVER BASED UPRIVER BARGE LINE.
- 5 TUGS, 12 BARGES, PROVIDING TRANSPORT OF WOOD PRODUCTS, AGGREGATES, CONTAINERS, SCRAP STEEL, AND SPECIAL SERVICES.

BERNERT BARGE LINES

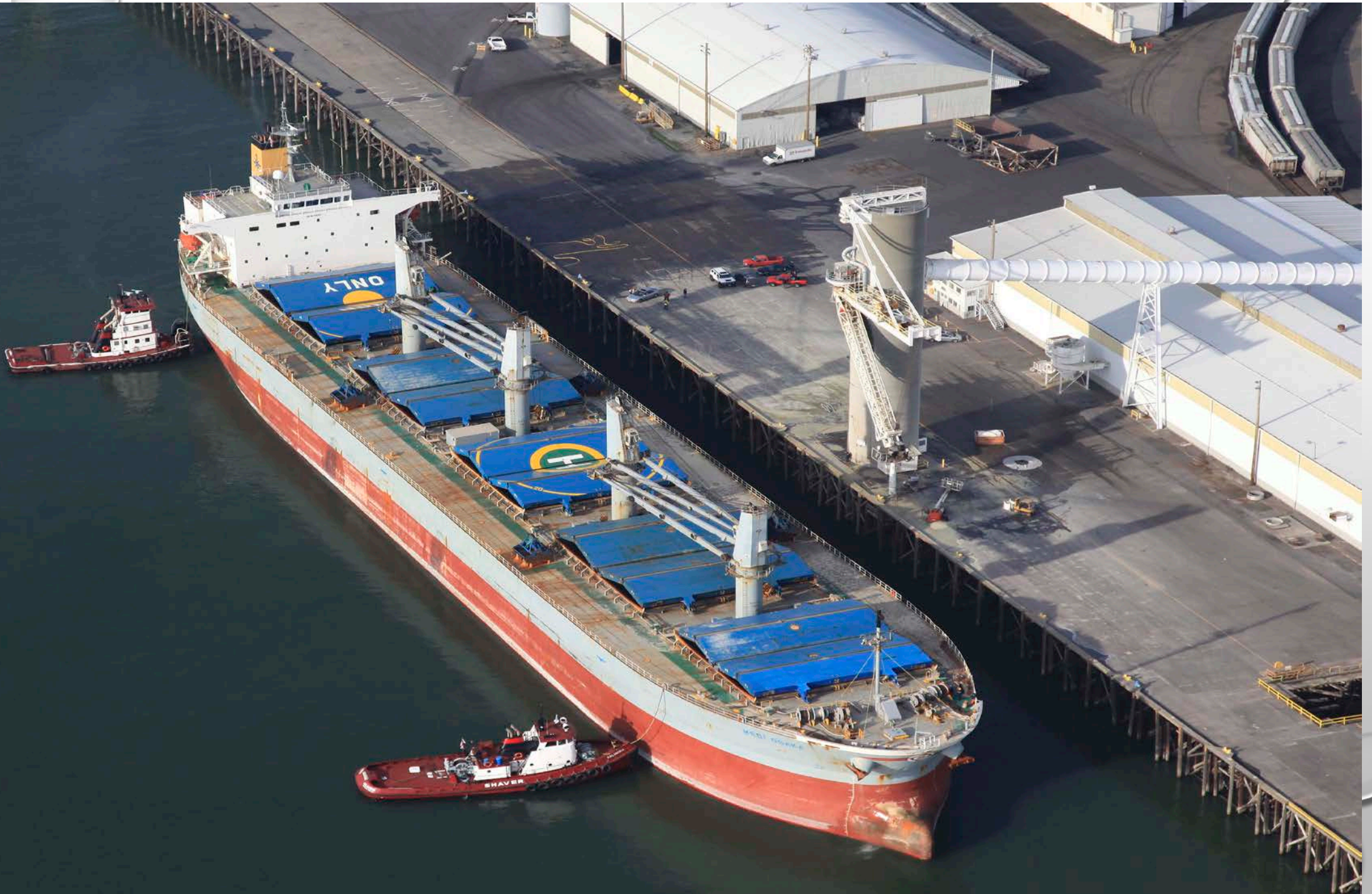


SHAVER TRANSPORTATION COMPANY

- PORTLAND BASED COLUMBIA SNAKE RIVER COMPANY. PROVIDING SERVICE ON UPPER AND LOWER COLUMBIA/SNAKE RIVER SYSTEM.
- OPERATE 13 TUGS AND 18 BARGES.
- PROVIDE SHIP ASSIST, GRAIN BARGING AND SPECIAL SERVICE TOWING.

SHAYER TRANSPORTATION COMPANY













CROWLEY

BARUC 435 1

