

 **TIDEWATER**
TRANSPORTATION & TERMINALS



Company Overview

Key Stats

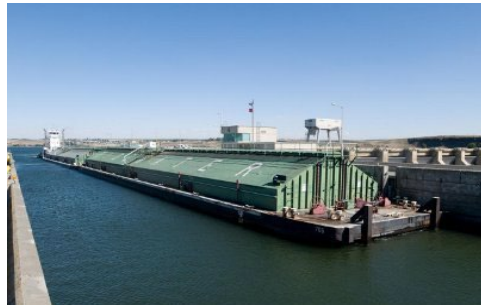
- *Founded in 1932*
- *Headquarters: Vancouver, WA*
- *280+ Employees*



Liquids



Grain



Terminals



Environmental Services



Key customers:



Tidewater on the Columbia Snake River System



465 miles of the river system
8 locks and dams

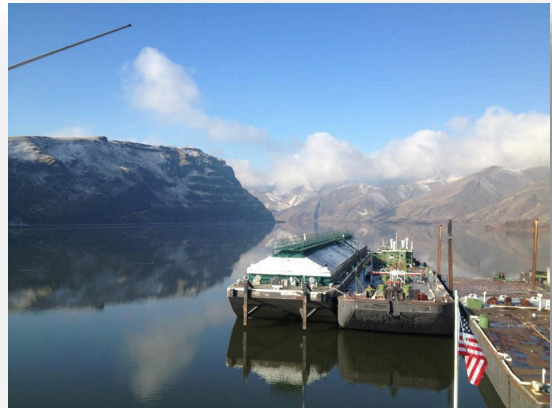
Tidewater Fleet

18 Inland “Push” Tugs

- 3,500hp to 4,500hp
- 100 to 575 Gross Tonnage
- Redundant critical systems
 - Propulsion, steering, generators, radar and communications
- Electronic charting (AIS) and GPS

170 Barges

- Tank
- Hopper
- Flat Deck
- Open Bin



Tidewater Fleet

New “Point Class” Tugs

- Crown Point, Granite Point, Ryan Point

Existing Tug Re-Powers

- 6 tugboat re-powers since 2007

Double-Hulled Tank Barges

- Upgrades implemented in advance of 2015 deadline

Maintenance Facility

- Company-owned maintenance facility/drydock



Commodities Transported

- Refined Petroleum Products and Ethanol
- Grain (wheat, corn, barley, soy, sorghum, etc.)
- Liquid Fertilizer (UAN 32%)
- Export Containers
- Solid Waste Containers
- Paper Products (chips, pulp, paper, sawdust)
- Special Projects (constructed equipment, dredge material, etc.)



Terminal Operations

Boardman Terminal

- Dry and refrigerated container handling
- 100' face dock for loading and unloading barges
- Ethanol dock
- Wood chip loading with on-site lab for wood chip sampling

Pasco Terminal

- Receive, store and distribute bulk liquid products
- Products handled include gasoline, diesel, bio-fuels, ethanol, fertilizer and agricultural and industrial chemicals
- Railcar loading rack
- Automated three-bay refined petroleum product truck rack
- Accessible by barge, pipeline, rail and truck

Umatilla Terminal

- Receive, store and distribute refined petroleum and fertilizer
- Products received by barge, rail, and truck, stored on site, dispatched by truck
- Automated two-bay refined petroleum product truck rack

Vancouver Terminal

- Container loading and unloading
- #2 diesel storage and handling

Wilma Terminal

- Receive, store and distribute fertilizer



Safety, Regulatory and Environmental

Safety and Environmental Protection



- Member of the AWO Responsible Carrier Program
- Pollution Prevention Program
- Behavior-Based Safety Program
- Audited under Petroleum Industry International Best-Practices for Vessel Operations
- Oil Companies International Marine Forum (OCIMF) Tanker Management and Self-Assessment (TMSA) Program

Longstanding Relationships with Regulators



US Army Corps of Engineers®



United States Coast Guard
U.S. Department of Homeland Security



Spill Response Capabilities

Boom – 32,100 ft

Storage – 94,935 bbls

4 Oily-Water Storage Barges, 6 Frac Tanks, 12 Portable Tanks

Vessels – 25 boats

21 Boom Boats, 4 Work Boats

Skimmers – 18

16 Douglas 2-inch Skip Paks, 2 Lamor MiniMax Brush Skimmers

Equipment

13 Vacuum Trucks, 100+ Drop Boxes, 36 Pumps, 10 Response Trailers



Audits & Inspections



Tidewater receives 75-100 annual audits and inspections from agencies, industry groups and customers

Columbia and Snake River Dams

Biological Opinion aka “BiOp” Litigation

- Environmental groups sued the Federal Government over the BiOp.
- Judge ordered a new Environmental Impact Statement.

2019 WA Legislative Session

- Clean Energy Bill recognized hydropower as renewable resource for state to achieve 100% carbon free energy by 2045.
- WA State budget includes \$750k for dam breaching study.

Dam Breaching in Media

- WA Orca Task Force – Whale recovery and dam breaching.
- 2019 Vulcan / ECONorthwest “Study”



Island Tug and Barge – British Columbia Canada

Acquired September 1, 2017



Island Tug and Barge has provided marine services on the West Coast of Canada for over 65 years.

Island Tug and Barge is the West Coast's largest bulk transporter of refined petroleum products.

Services include bulk fuel transportation, specialty towing, marine fuel sales, and marine logistics.



Tidewater welcomes Island Tug and Barge to the family.